

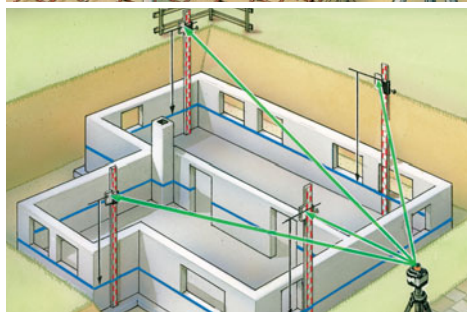
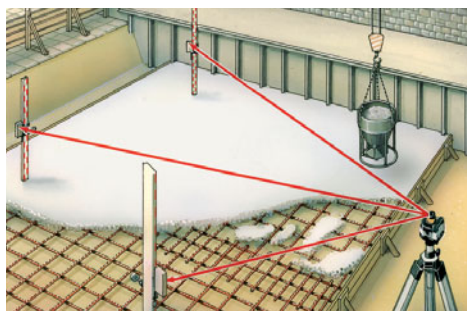
Laserliner®

SensoLite 410 Set



High-performance laser receiver with extremely large receiving range for red and green rotary lasers

Rev.0511



- Extremely **long laser reception range** for quick laser acquisition at great distances.
- Robust **waterproof** housing with strong head and side magnets.
- **LC displays at front and rear.** Melodies indicate the level of the laser beam. Illuminated front LC display.
- Extremely bright **3-colour LEDs** are located at the front, rear and side for remote identification.
- **Versus function:** The receiver monitors the reference height of the rotary laser, effectively preventing false measurements. Visual and acoustic signals indicate when the laser beam moves out of the reference height, e.g. as the result of external influences acting on the rotary laser.
- **Extremely loud piezo-buzzer** possible
- **Improved universal holder** with circular bubble level
- **Reception range up to 400 m** for red and green laser

TECHNICAL DATA

LASER RECEPTION RANGE

1 - 400 m (depends on the rotary laser)

LENGTH OF RECEIVER UNIT 124 mm

NECESSARY ROTATION SPEED

300 - 1100 r/min

WATER AND DUST PROTECTION IP 67

POWER SUPPLY

1 x 9V block

DIMENSIONS (W x H x D)

without universal mount
75 x 160 x 31 mm

WEIGHT

with battery / without universal mount
0,29 kg



Water and dust protection per IP 67



For red and green laser



Strong head and side magnets



Illuminated LC display, super-bright signal LEDs



SensoLite 410 Set
including universal mount
+ battery

ARTICLE	ARTICLE-NO	EAN-CODE	PU
SensoLite 410 Set	028.75	4 021563 663934	1

HIGH SPEED

